

MERCER

PETITE



Shown in
Badlands (Eclipse)

WEIGHT CAPACITY	136 kg (300 lbs.)
SEAT-TO-FLOOR	45.7 cm (18")
SEAT DEPTH	45.7 cm (18")
SEAT WIDTH	45.7 cm (18")
CHAIR DEPTH	96.5 cm (38")
CHAIR WIDTH	81.2 cm (32")
CHAIR HEIGHT	101.6 cm (40")
OPERATION	USB Hand Control

FUNCTIONS AND FEATURES

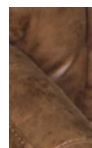
 POWER HEADREST  POWER BACKREST

 POWER LUMBAR  FOOTREST EXTENSION

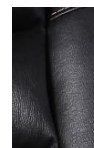
 USB CONTROL

The new Petite Mercer retains all the features of the larger model, and now gives the opportunity for more people to experience this incredible chair. This dual motor lift chair is a bold addition to any living room. Featuring a luxurious grained leather look, independent head, foot, back, and lumbar support, the Mercer delivers a relaxation experience that's second to none. This stylish space-saver is available in two distinct colour options.

FABRIC OPTIONS



BADLANDS
(SADDLE)



BADLANDS
(ECLIPSE)

VivaLIFT!
POWER RECLINERS
By Proline® Mobility Products Corp.

THEOREM
CONCEPTS
RECLINER AND LIFT CHAIR SPECIALISTS

PRIORITY ONE
MOBILITY

priorityonemobility@bigpond.com

03 6424 5414 (DEVONPORT)

• www.priorityonemobility.com.au

03 6431 7752 (BURNIE)